

Kate Greenaway Nursery School and Children's Centre: new entrance and alterations



The aim of this project was to provide a clear identity for Kate Greenaway Nursery School and Children's Centre, and to improve its accessibility and security. AAB architects were appointed by Kate Greenaway Nursery in 2006. The construction was phased to enable the work to be carried out whilst the building was occupied, and the works were completed in 2008.

The boundary wall was rebuilt to create an attractive public frontage with varying degrees of transparency: the children's play areas are screened, whilst views are opened up from the street through to the reception area. A new external workshop for children's art activities and a buggy store are located behind the wall. The external space is carefully planned to allow sufficient space for parents and carers to gather, buggies to be stored and for entering and leaving the building.

The front of the existing building was re-clad to improve its appearance and thermal performance, and to enable new windows to be inserted. The new reception desk is positioned to allow a direct visual connection to the external entrance gate, enabling staff to welcome visitors in person. Internal spaces were also altered to provide additional meeting and office spaces, a larger kitchen and refurbished toilets.

The design team included:
Structural engineer
Building services
Quantity surveyor
Graphic designer

Cornerstone Consulting
Barber Consultants
Ian Sayer & Co
Mette Heinz



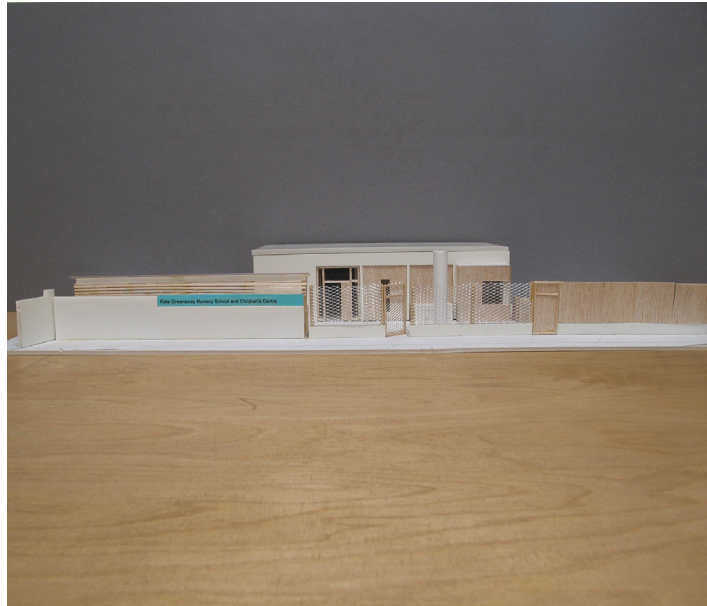
Existing entrance gate, boundary wall and fence



Existing external storage



Existing buggy store



Consultation model showing proposed elevation

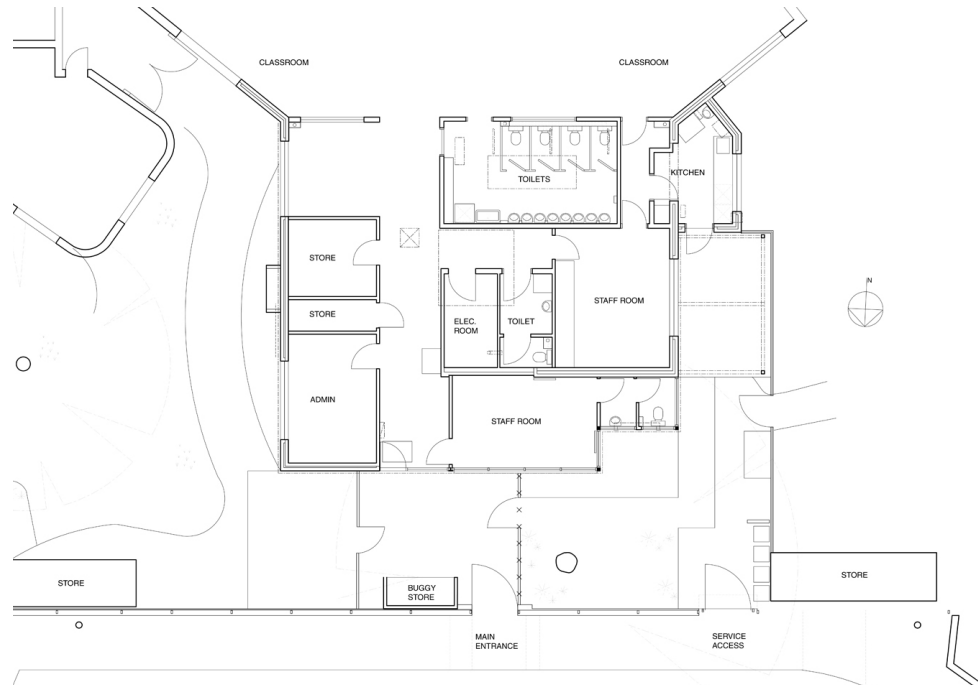


Model showing proposed reception desk



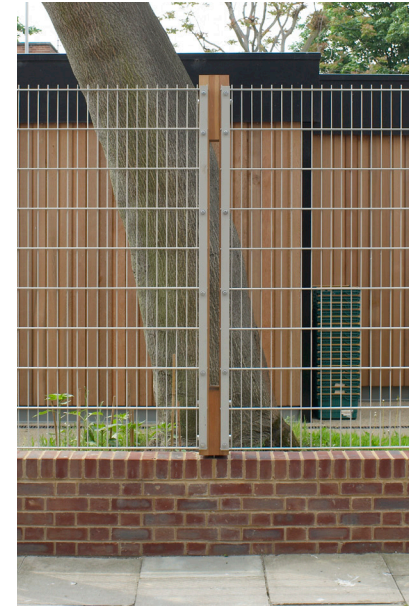
Model with feedback notes

A simple model was used to discuss the proposed design with staff, which led to adjustment and modification of the scheme. The model helped staff visualise the implications of internal alterations, such as the use of sliding-folding acoustic screens, to enable spaces to be connected or sub-divided as needed to fit the busy timetable of the children's centre.

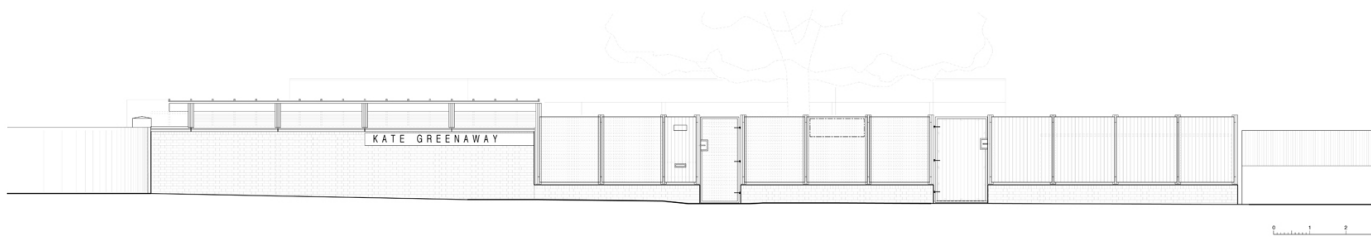




Boundary wall and fence



Fence and boundary wall detail



Elevation of wall and boundary fence



Entrance gate

Summary
Context
Process

Project - bike and buggy store

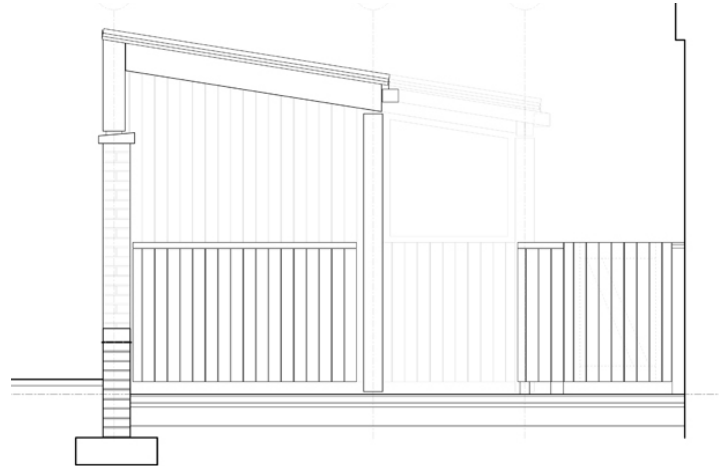
The design was developed to be economical, using a variety of simple, unfinished materials and standard proprietary elements, such as metal fence panels and polycarbonate roofing.

The new boundary wall matches the brickwork of the surrounding estate, and provides support for the Douglas Fir structure behind, which is infilled with Douglas Fir clad panels, and fixed and sliding glass panels. The paving is resin bound gravel to provide a smooth and trip free surface.

Kate Greenaway Nursery School and Children's Centre: new entrance and alterations



Art workshop and buggy store



Section through buggy store



View of bicycle and buggy store



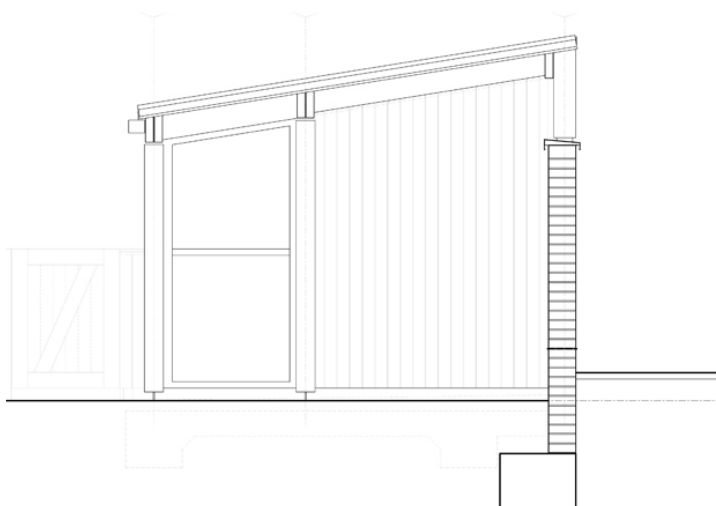
View of entrance from buggy store



Art workshop



View through art workshop window



Section through art workshop



Detail in art workshop